

# OACIS

Open Architecture Control Integrated System

## Encoder Wiring Example with Autonics

Version 01.05



[www.atainc.com](http://www.atainc.com)

[ata@atainc.com](mailto:ata@atainc.com)

All Rights Reserved

---

## CONTENTS

I. MODEL SELECTION .....	3
II. EXMAPLE #1 .....	4
III. EXAMPLE #2 .....	5

**I. MODEL SELECTION**

**A. Output Phase: You can select one of below options.**

- i. 3: A, B, Z
- ii. 6: A, /A, B, /B, Z, /Z

**B. Output Type: There are four options, T, N, V and L. You have to select one of “V” or “L”.**

- i. V: Voltage Output
- ii. L: Line Driver Output

**C. Input Voltage: There are two options, 5VDC and 24VDC. You have to select “5VDC”.**

**A. 출력상: 아래 두 가지 옵션 가운데 하나를 선택할 수 있습니다.**

- i. 3: A, B, Z
- ii. 6: A, /A, B, /B, Z, /Z

**B. 출력형태: 네가지 옵션(T, N, V, L) 가운데, 두 가지 옵션(“V” 또는 “L”) 을 선택할 수 있습니다.**

- i. V: 전압 출력
- ii. L: Line Driver 출력

**C. 전원 입력: 5VDC 와 24VDC 두 가지 옵션이 있습니다. 이 가운데 “5VDC” 를 선택해야 합니다..**

## II. EXMAPLE #1

A. Selected Model: Autonics #E60H20-5000-3-V-5 (Engular Type = deg)

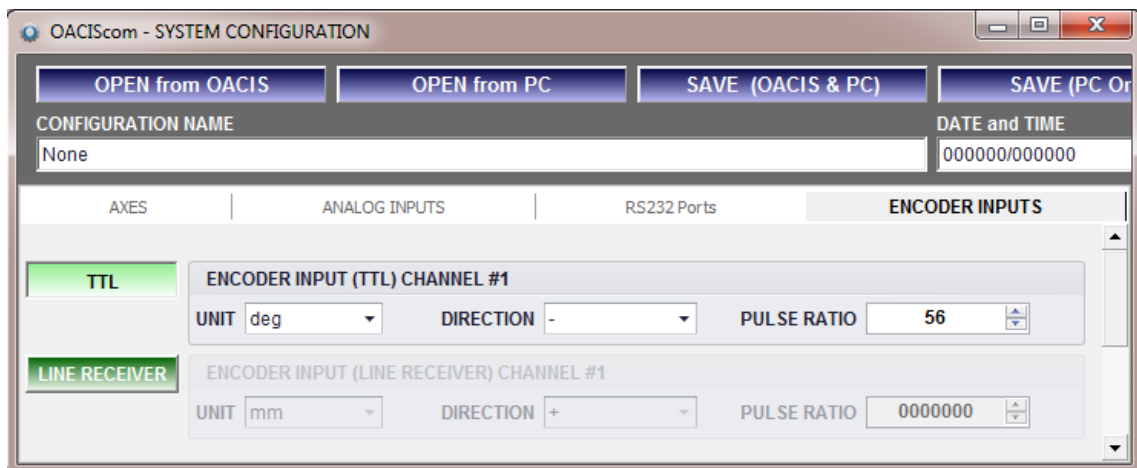
B. OACIS Input Signals: TTL

C. Pulse Ratio in the System Configuration: 56 (= 5000 x 4 / 360).

D. Pin Map

PIN No.	OACIS DG Channel	AUTONICS Encoder
1	+5V	Brown (+V)
2	-5V	Blue (0V)
3	GND	N/A
4	/A	Black (OUT A)
5	/B	White (OUT B)
6	/RESET	N/A
7	/Z	Orange (OUT Z)
8	/ALM	N/A
9	GND	N/A
10	GND	N/A
11	--	--
12	--	--
13	--	--
14	--	--
15	Shield	Shield

E. Set Encoder Inputs in System Configuration



**III. EXAMPLE #2**

- A. Selected Model: Autonics #E60H20-5000-6-L-5 (Engular Type = deg)
- B. OACIS Input Signals: LINE RECEIVER
- C. Pulse Ratio in the System Configuration: 56 (= 5000 x 4 / 360).
- D. Pin Map

PIN No.	OACIS DK Channel	AUTONICS Encoder
1	+Vcc (5V)	Brown (+V)
2	0V	Blue (0V)
3	A	Black (A)
4	/A	Red (/A)
5	B	White (B)
6	/B	Gray (/B)
7	Z	Orange (Z)
8	/Z	Yellow (/Z)
9	Shield	Shield

- E. Set Encoder Inputs in System Configuration

