

OACIS

Open Architecture Control Integrated System

Firmware Update Guide

Version 02.01



www.atainc.com

ata@atainc.com

All Rights Reserved

Table of Contents

I. Software Preparation	3
A. Installing C2Prog.....	3
II. Hardware Preparation	5
A. PreParing the RS232 Cable	5
B. Connect PC to OACIS via the RS232 cable	5
III. Firmware updates for Main and Control	7
A. Running the “C2Prog.exe” Firmware Update Program	7
B. Update File Selection and Configuration Method	7
C. Firmware Update Verification	8
REVISION	9

I. Software Preparation

A. Installing C2Prog

1. Visit the C2Prog website and download the **C2Prog_v2.2.1.exe** file (or the latest version).
(Link: [Download - C2Prog](#))



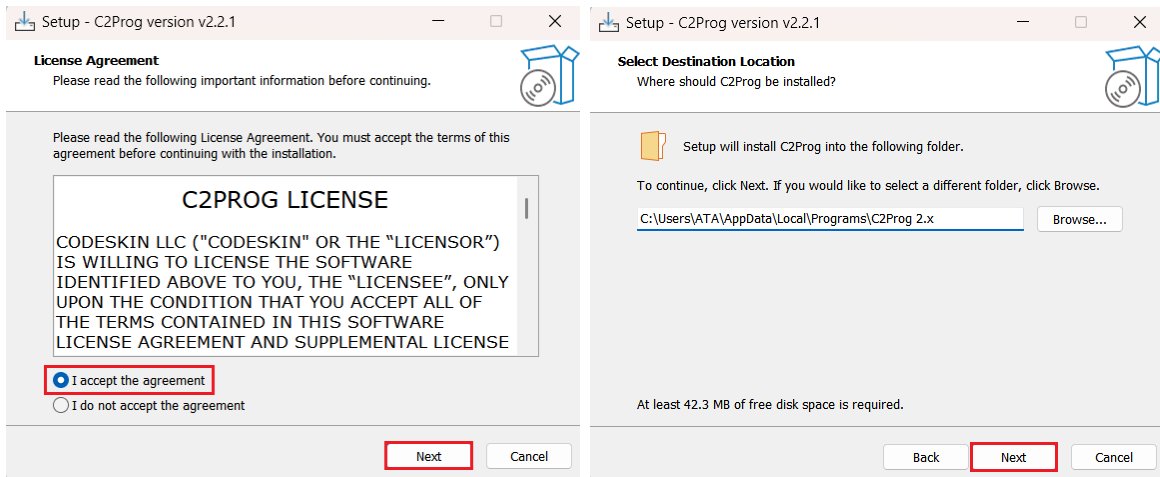
By downloading C2Prog, you are acknowledging and accepting the [license statement](#) below.

Current Release

[Manual](#)

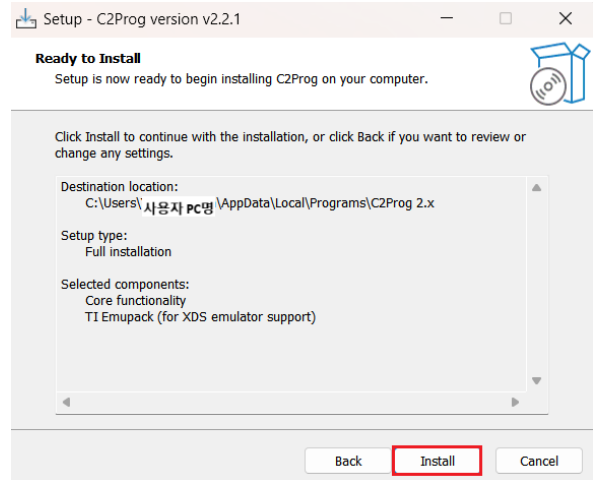
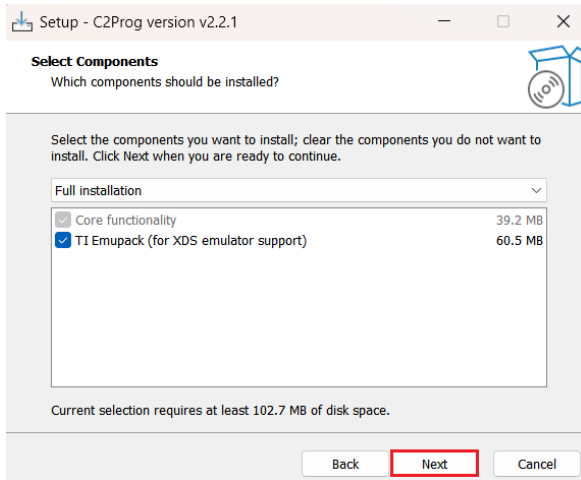
Platform	File	Release Date
Windows	C2Prog_v2.2.1.exe	7/31/2025
MacOS	C2Prog_v2.2.1.dmg	7/31/2025
Linux Intel (64-bit)	unpack_c2prog_2.2.1_amd64.run	7/31/2025

2. Run the downloaded “**C2Prog_v2.2.1.exe**” file.
Agree to the **License Agreement**, then click **Next** to proceed with the installation.
3. Select the installation path and continue with the installation.

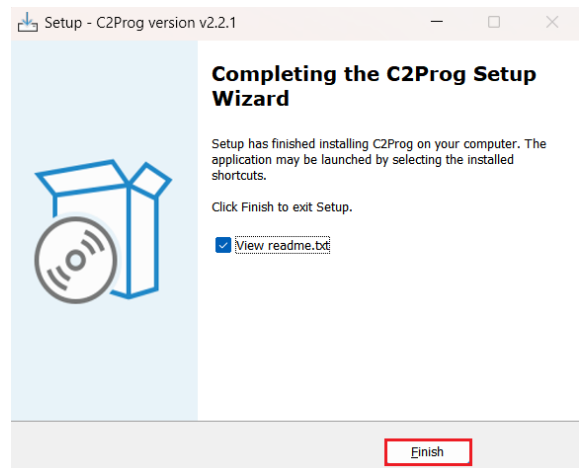
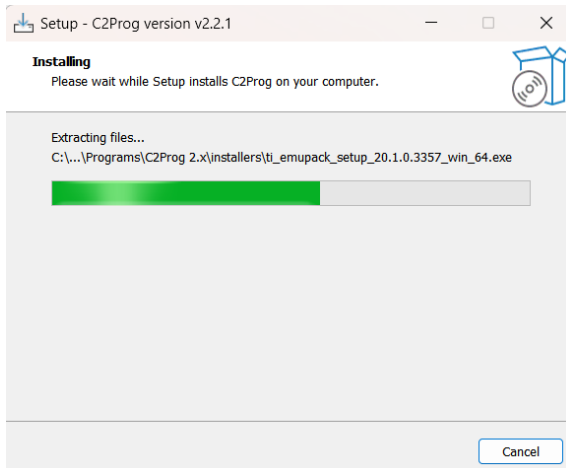


MISC

4. Select the installation components and proceed with the installation.
5. Review the selected components and continue with the installation.



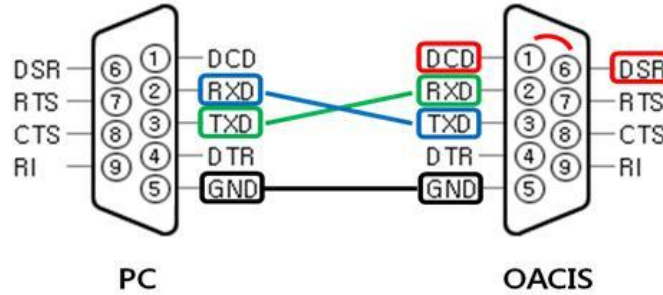
6. Installation complete.



II. Hardware Preparation

A. Preparing the RS232 Cable

- i. You need a RS232 cable to connect PC to OACIS. If you have to use a USB Converter cable on the PC side, you will need to install a proper USB-to-Serial driver to the USB cable. The cable PinMap is shown as follows:



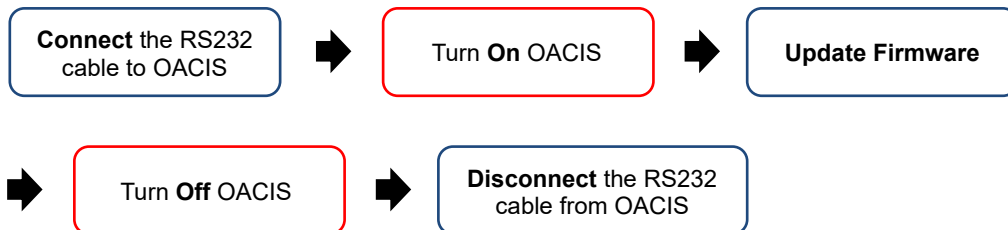
- ii. **⚠Caution:** You should follow the instructions below. Or severe problems might happen in your OACIS system.

- ①DCD and ⑥DSR on the OACIS side must be connected as shown above. (red line)
- ②RXD on the PC side and ③TXD on the OACIS side must be connected. (blue-line)
- ③TXD on the PC side and ②RXD on the OACIS side must be connected. (green-line)
- ⑤GND on the PC side and ⑤GND on the OACIS side must be connected. (black-line)
- All other pins that are not used must be left open.

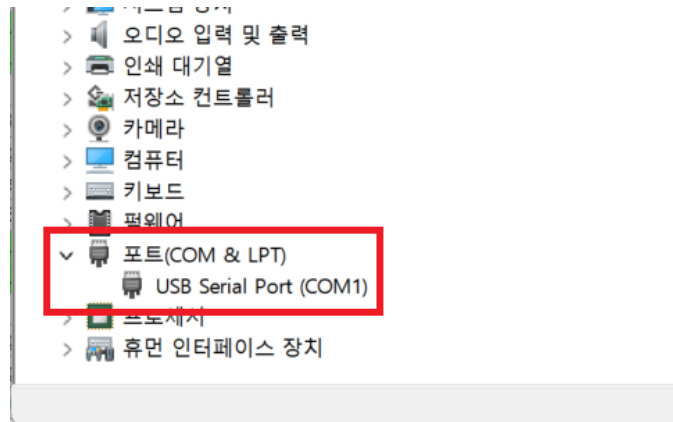
B. Connect PC to OACIS via the RS232 cable

- iii. **Connect the RS232 cable to the OACIS → Power on the OACIS → Proceed with the firmware update → Once the update is complete, power off the OACIS → Disconnect the RS232 cable from the OACIS.**

⚠ Caution: IF the above sequence is not followed precisely, severe issues may occur with the OACIS system.



- iv. It is essential to **check the port number (COM port)** to which the RS232 cable is connected in the "Device Manager." This port number must be **correctly configured** during the firmware update process, so it is important to verify it in advance. Additionally, by confirming the port number, you can ensure that the RS232 cable is **properly connected** between the PC and the Oasis system.



- v. After connecting the PC and Oasis using the RS232 cable, **power on the OACIS**. The OACIS has two DSP update ports: **RSCN1 for the Main Firmware update** and **RSCN3 for the Control Firmware update**. Once powered on, you should check the **program number** and **step number** on the display panel at the top of the OACIS controller. When updating the **Main Firmware**, **nothing is displayed on the screen**. When updating the **Control Firmware**, either "000 000" is shown, or **the step number in "int 000" continues to increase** on the display.
- vi. During the firmware update, the OACIS panel displays the following screen:



III. Firmware updates for Main and Control

- Only the RS232 cable location differs; the update method is the same.

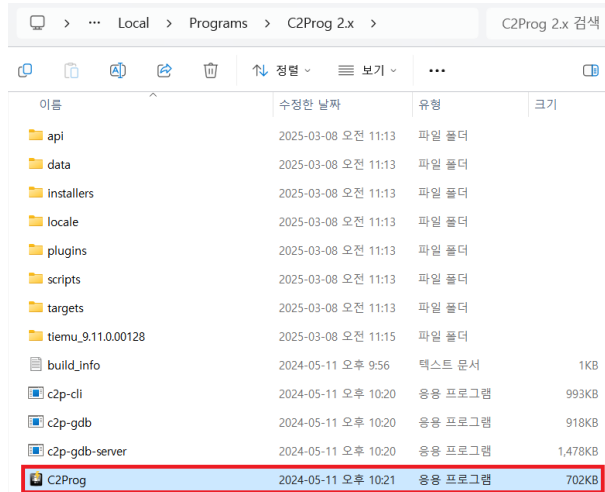
RSCN1: Main Firmware

RSCN3: Control Firmware

A. Running the "C2Prog.exe" Firmware Update Program

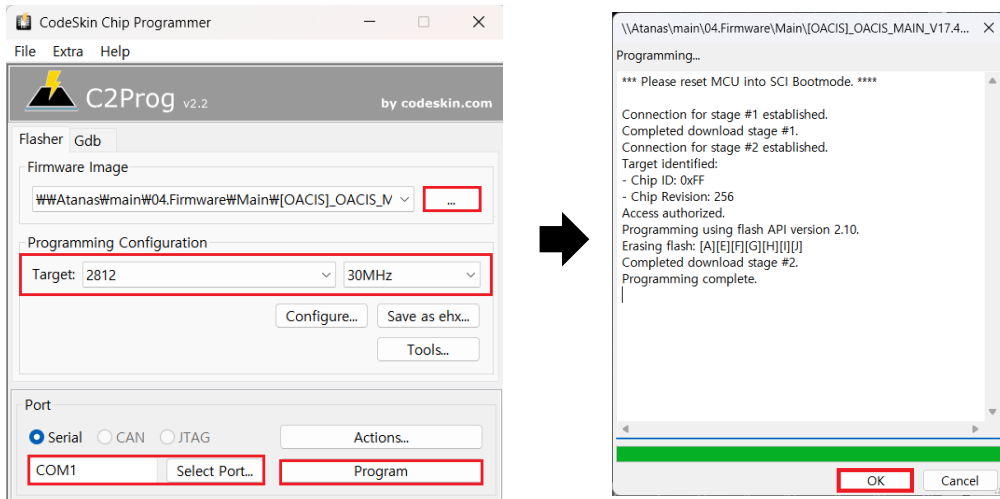
- vii. Navigate to the path **C:\Users\PCname\AppData\Local\Programs\C2Prog 2.x** on the C drive, and find and run the "C2Prog.exe" executable file within that folder.

✦ "PC name" may vary depending on the user's Windows account name, so please verify the actual path before running the program.



B. Update File Selection and Configuration Method

- viii.
 1. Click the "..." button to select the firmware file to be updated.
 2. Set the Target value to "2812" and the clock speed to "30MHz".
 3. Check the COM port number to which the RS232 cable is connected, and enter the correct port number. The correct port must be selected to ensure smooth communication with the device.
 4. Once all settings are complete, click the "Program" button to begin the firmware update.



MISC

C. Firmware Update Verification

- ix. In the OACIScom program, click on “**ABOUT**” to check the firmware version.



REVISION

V2.01(2025-08-18): Initial release.